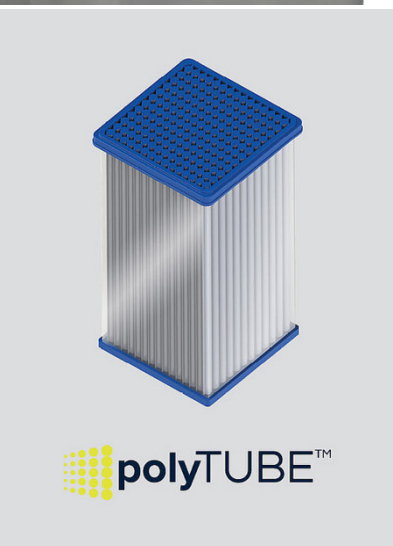


Manual Bag Openers with polyTUBE™ Filtration Technology

RSM  polyTUBE™



SAFER. SMARTER. BAG OPENING, REDEFINED.

The new **RSM** sets a new benchmark in manual bag emptying, combining **safety, efficiency, and ease of use** in one innovative solution.

Equipped with an **integrated polyTUBE™ de-dusting filter unit** featuring **advanced nanofibre technology**, the RSM delivers high-efficiency dust control. With emissions below $1\text{mg}/\text{Nm}^3$, it helps maintain a **cleaner, healthier working environment**.

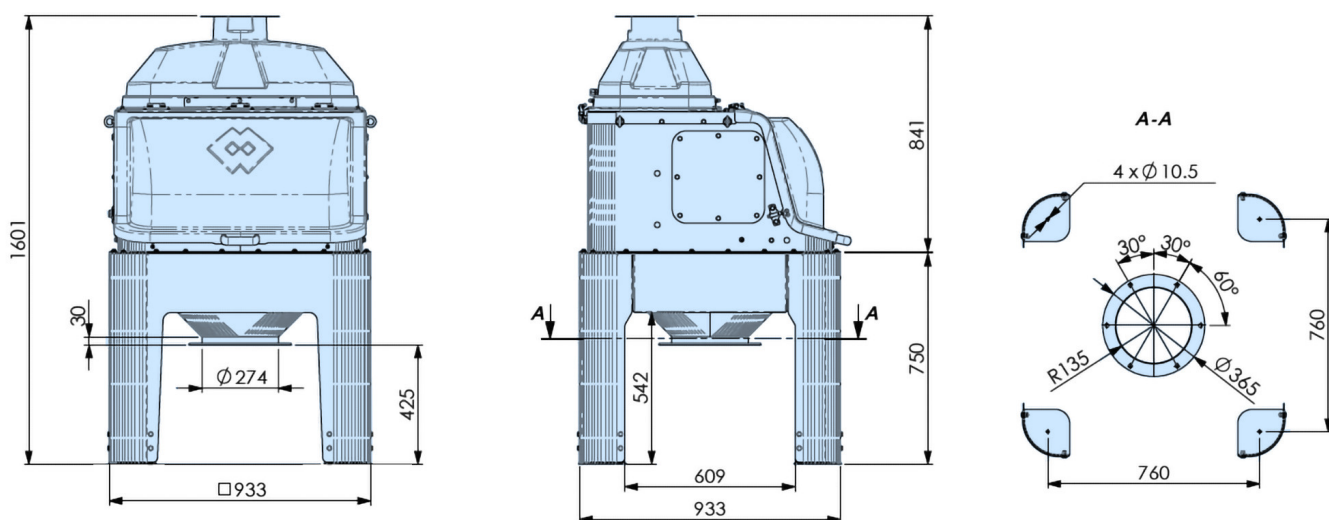
Fully electric-powered, the RSM eliminates the need for compressed air, **simplifying installation, boosting energy efficiency, and reducing operating costs**.

Its **compact footprint** maximises space usage, while the **lightweight hatch** improves operator safety and reduces fatigue. Designed for **fast, straightforward maintenance**, the polyTUBE™ filter can be removed easily for **quick cleaning and servicing**.

With **immediate availability from stock**, the RSM is the ideal choice for customers seeking **reliability, rapid delivery, and operational convenience** — all in a single, ready-to-use machine.

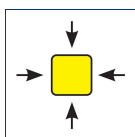


Overall Dimensions



Dimensions in mm

Benefits



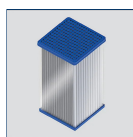
Space-saving overall dimensions and compact user-friendly design



Ready-to-use ex-stock equipment for fast delivery



With 100% electric operation no compressed air required — reducing energy consumption and improving overall efficiency



Advanced polyTUBE™ nanofibre dust filter ensures optimum de-dusting



Quick-release components enable for fast dismantling, effortless cleaning, and immediate servicing



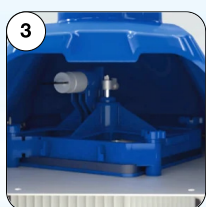
Technical support and worldwide availability of spare parts thanks to global WAMGROUP® subsidiary network

Technical Features

- **Casing Material:** 304 SS with food-grade plastic components
- **Power Supply:** Single-phase 220 V AC, 50/60 Hz for universal compatibility
- **Filtration System:** Advanced polyTUBE™ filter with high-performance nanofibre media
- **Filtering Surface:** 4.6 m² for optimum efficiency
- **Filter Cleaning:** Reliable mechanical system – no compressed air required
- **Integrated Fan:** Energy-efficient 168 W, 24 VDC
- **Compact Design:** Space-saving footprint, ergonomic layout, and straightforward installation
- **Supports:** Height-adjustable for maximum flexibility

① Electronic control panel

② Lightweight hatch



Hood with  polyTUBE™ filter elements

④ Hopper

⑤ Rest

⑥ Grille



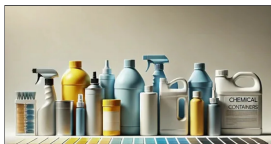
Industries



Animal Feed Milling



Plastics Processing



Chemicals Processing



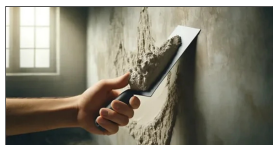
Glass Processing



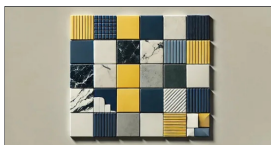
Paint, Varnish, Resin Processing



Environmental Technology



Drymix Processing



Ceramics Production



Foundries



WAM®



MAP®



TOREX®



EXTRAC®



WAM® AIR



WAM® VALVES



SILOFAB®



SAVECO®



EXTRAC®



UNI EN ISO 9001
Certified Company

www.wamgroup.com