

Multi-Choke Valves VPM



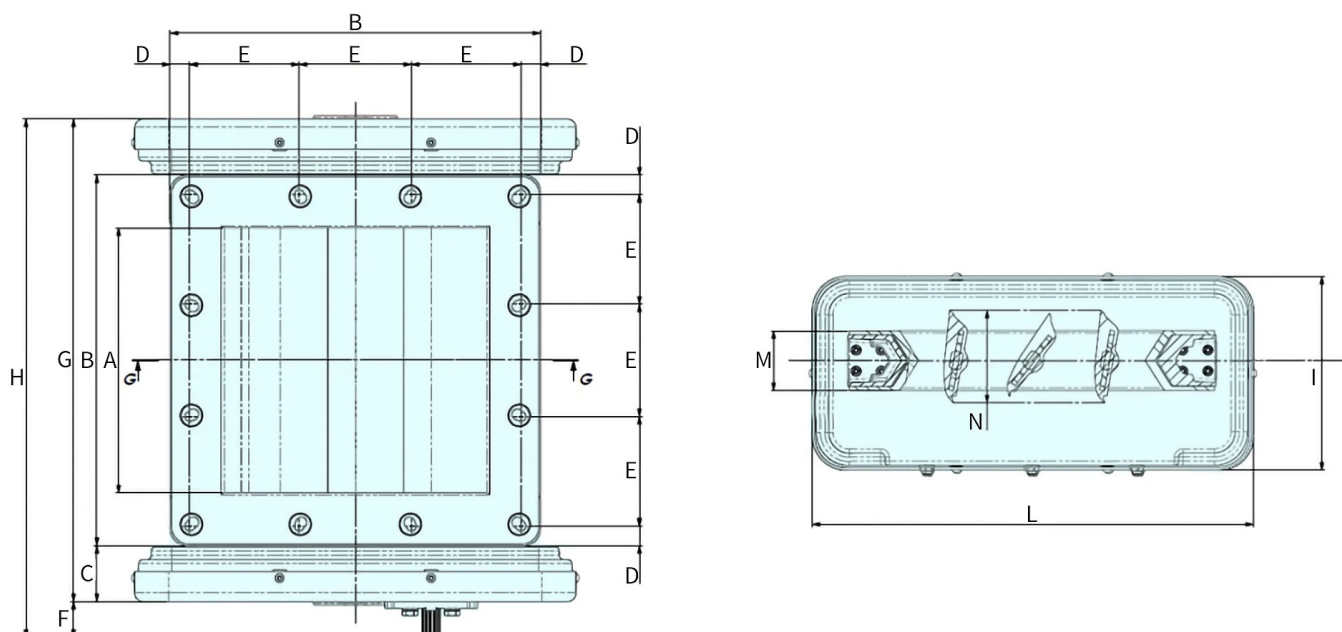
FEED, EXTRACT, INTERCEPT – CLEANLY

The VPM Multi-Choke Valve is designed for discharge, interception and feeding of powders and granular materials. It is especially suited for substances that require strict protection against contamination or pollution, ensuring safe and hygienic processing.

VPM Multi-Choke Valves can be installed on loading or discharging pipes to facilitate emptying or filling of drums, bins, and FIBCs.



Overall Dimensions



VPM	A (mm)	B (mm)	C (mm)	D (mm)	E (mm)	E (Nr)	F (mm)	BOLTS	G (mm)	H (mm)	I (mm)	L (mm)	M (mm)	N (mm)	kg
300 (12")	315	440	53	25	128.3	12	43	M10	573	616	230	524	71	101	21
400 (16")	414	539	67	20	100	20	45		672	717				145	30

Compatible with CEMA flanges

Benefits



Problem-free assembly, compatible with both WAM® and CEMA flanges



Highly abrasion-resistant thanks to replaceable SINT® gasket



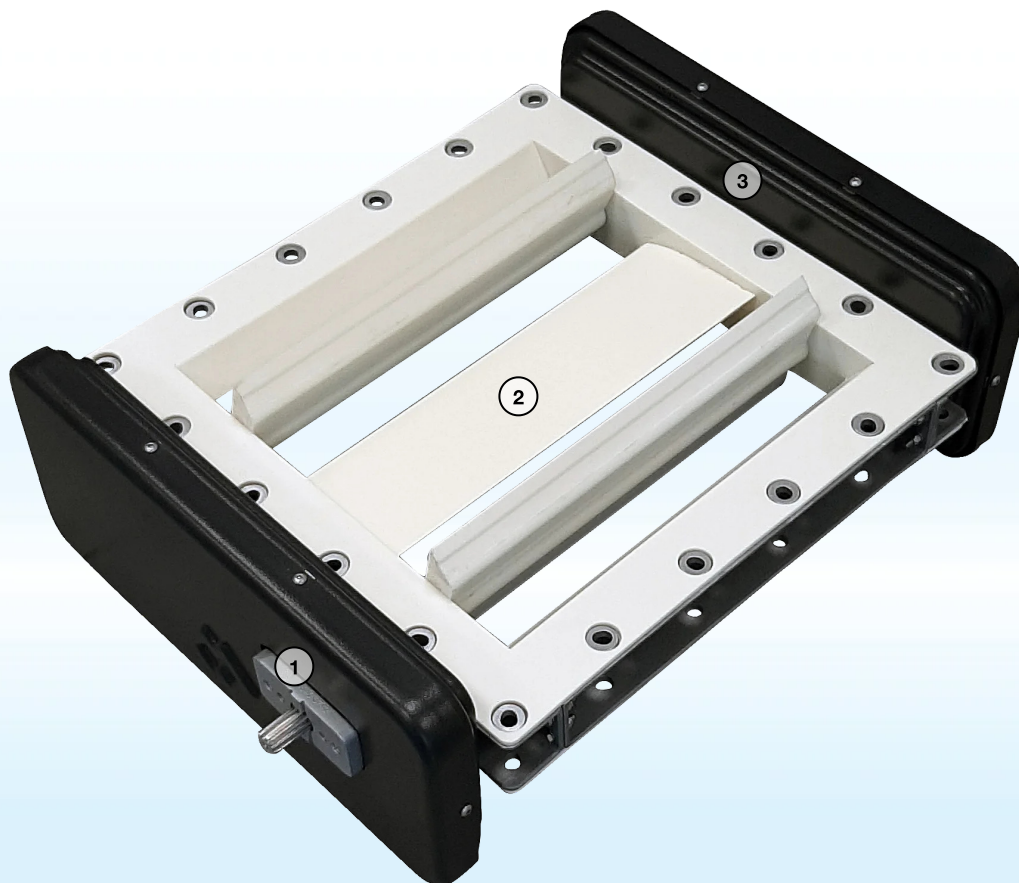
Technical support and worldwide availability of spare parts thanks to WAMGROUP® subsidiary network



Improved material flow

Technical Features

- Frame made of aluminium alloy
- Compatible with WAM® and CEMA flanges
- Compliant with European food-grade standard (EC) No. 1935/2004
- Replaceable SINT® engineering polymer gaskets for both standard and food-grade applications
- PATENTED technical design
- Discharge of materials with poor flowability thanks to the vibration of the individual flaps.



1 Actuator connection

2 Flaps



3 Vibrator Kit (Accessory)

Industries



Animal Feed Milling



Plastics Processing



Drymix Processing



Food Processing



Flour Milling



Cosmetics Processing



Detergents Processing



Chemicals



Ceramics Production



Glass Processing

ACTUATOR COMPATIBILITY



WAMGROUP®



WAM®



MAP®



TOREX®



EXTRAC®



WAM® AIR



WAM® VALVES



SILOFAB®



SAVECO®



WAM® VALVES



UNI EN ISO 9001
Certified Company

www.wamgroup.com