

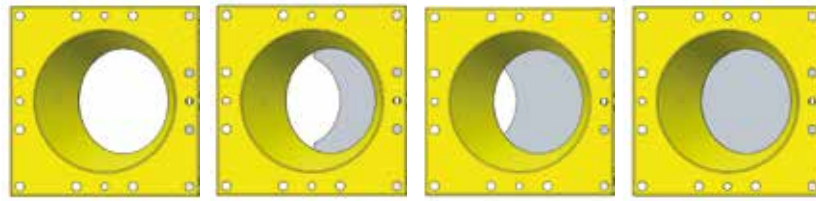
Inclined Slide Valves

VDI



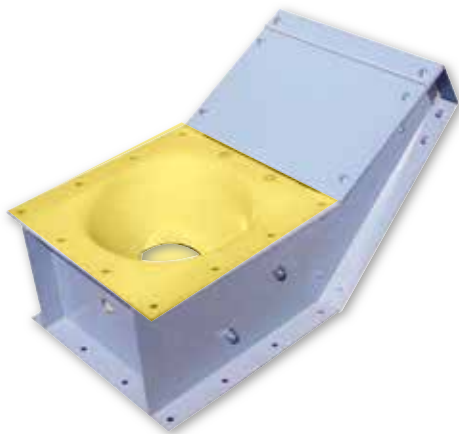
FLOW INTERCEPTION AND MATERIAL FLOW CONTROL

VDI Inclined Slide Gate (Feeder) Valves complement the simple function of intercepting the material flow by gravity with the possibility of controlling it.



Material flow control by adjusting the cross section of the opening.

The special asymmetric geometry of the blade allows flow adjustment, which gives the valve to a certain extent volumetric feeding characteristics. VDI Slide Gate Valves can be mounted at the outlet of hoppers, bins, silos, screw conveyors or at the inlet of loading bellows. Due to the various blade options, they can be used in virtually all industries, including the food industry.

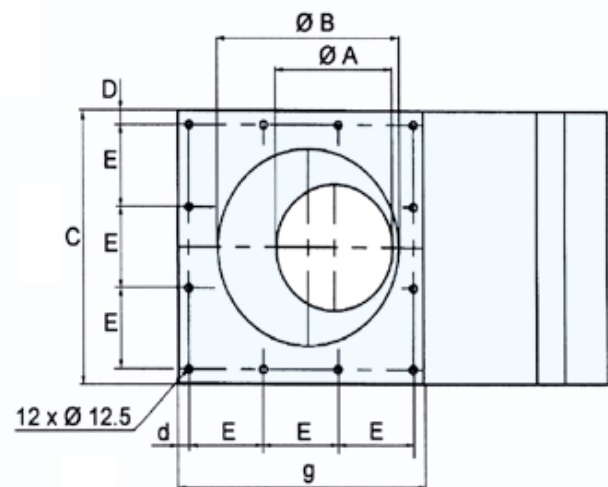
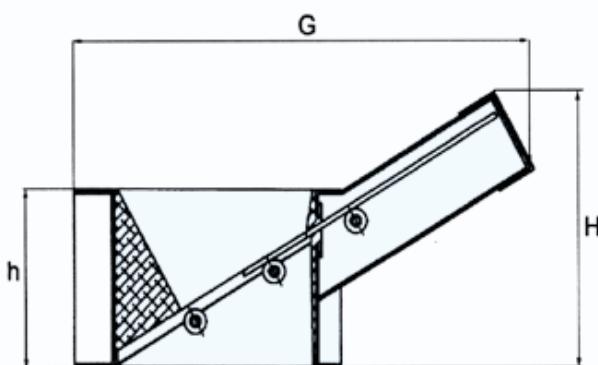


Standard version



Food-grade version

Overall Dimensions



CODE	Ø A	Ø B	C	D	d	E	Ø F	Bolts	G	g	H	h	kg
VDI0150..	137	225	311	15.5	15.5	93.3	12.5	M 10	593	311	358	233	22
VDI0250..	200	310	431	23.0	19	128.3	12.5	M 10	780	422	392	258	38
VDI0300..	250	360	481	18.0	18	89.0	12.5	M 10	832	481	462	296	67

1 = mild steel / 2 = 304 stainless steel

Dimensions in mm

Benefits



Even material flow



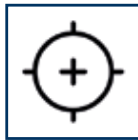
Eased material flow from storage container



SINT® anti-wear engineering polymer



Better material flow than with butterfly valves or slide gate valves



Enhanced feeding accuracy

Technical Features

- SINT® engineering polymer-lined contact parts of mild-steel or stainless-steel frame
- Interchangeable mild-steel, stainless-steel or SINT® engineering polymer-coated blades
- Interchangeable actuators: manual, pneumatic, electric gear motor-type
- Intermediate blade positions to enhance feeding characteristics
- Tapered inlet
- Dustproof design



Industries



Animal Feed Milling



Plastics Processing



Dry-Mix Processing



Bakeries



Flour Milling



Cosmetics



Environmental Technology



Chemicals



Ceramics



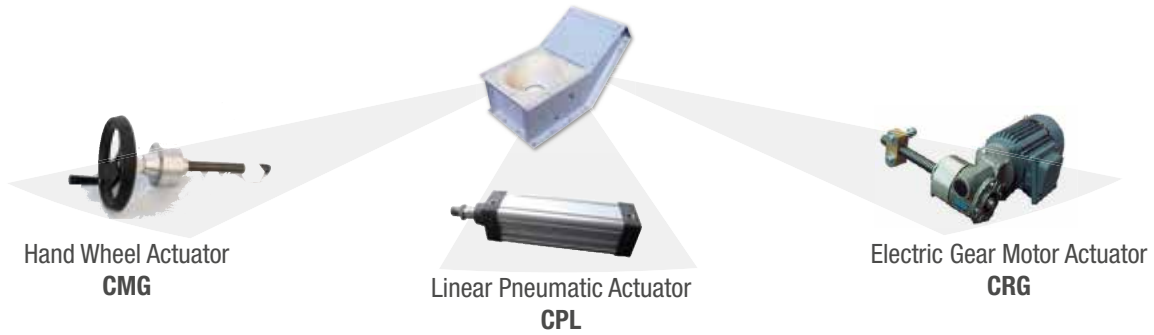
Glass Processing

Application



ACTUATOR COMPATIBILITY

For further details refer to Technical Catalogue



203001746 April 2021 Rights reserved to modify technical specifications.

This brochure has been edited for distribution in European Union countries.



www.wamgroup.com