

Submersible Chopper Pumps SPH



Submersible Chopper Pumps SPH

EFFICIENT, COMPACT AND VERSATILE

SPH-type Submersible Chopper Pumps are designed for lifting and chopping lumpy solids or fibre in livestock slurry, biogas digestate and industrial effluents. The high-efficiency mechanics are the result of an innovative top suction system that prevents clogging of the pump even under harsh working conditions.

The triple chopping system enables the shredding of coarse matter, while the compact design and reduced overall dimensions make it easy to handle and install.

The SPH range is available with a variety of accessories suitable for multiple applications. CHIOR® SPH Submersible Chopper Pumps can be installed in different configurations, either fastened to a vertical pole fixed to the tank or free-standing on the bottom of the tank.

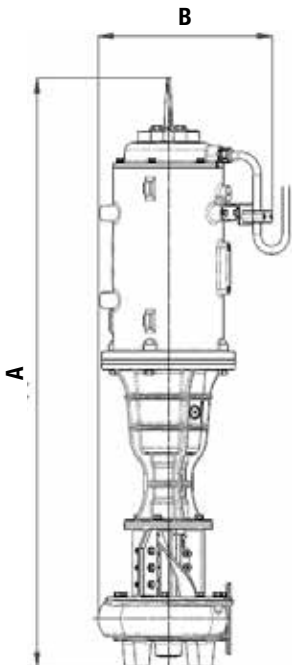


Pole-mounted application



Free-standing application

Technical Data



Model	Drive Power (kW)	Dimensions (mm)		Weight (kg)
		A	B	
SPH 110	11.0	1,560	460	280
SPH 150	15.0			285
SPH 185	18.5			290

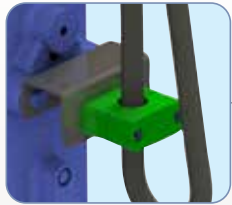
Dimensions in mm

Benefits

- ✓ High-efficiency, low-energy consumption motor
- ✓ High lifting efficiency thanks to top suction system
- ✓ Efficient chopping system preventing clogging
- ✓ Anti-leakage design for extended durability
- ✓ Easy maintenance thanks to modular design

Technical Features

- Manufactured from cast iron
- Submersible IE3 motor (Premium Efficiency)
- 3-phase, 4-pole, insulation class F, IP68 protection electric motor
- Thermal probe preventing motor from overheating
- Torsional elastic coupling between motor and transmission shaft
- Cemented carbide mechanical seal
- 21mm diameter EM7 rubber-sheathed cable with stainless-steel cable gland

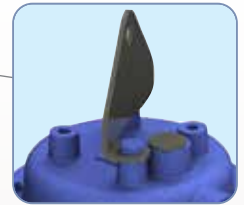
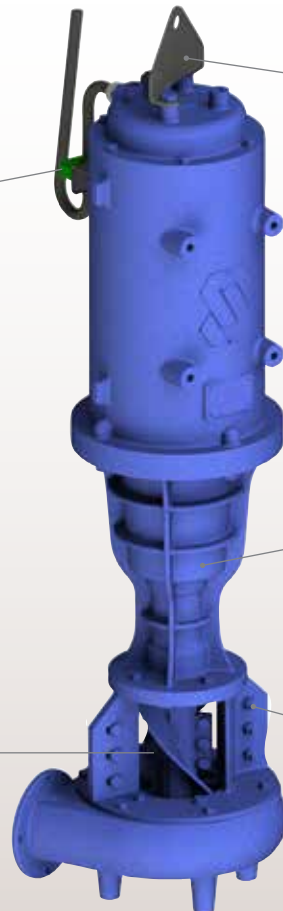


Electrical cable with strain relief system

TRIPLE CHOPPING SYSTEM.

Chopping operated by:

- Counter-knives
- Shear bars
- Counter rotor



Lifting bracket



Oil-bearing drive unit

Counter rotors, counter knives and shear bars manufactured from treated and hardened material

Accessories



Pole-mounting kit



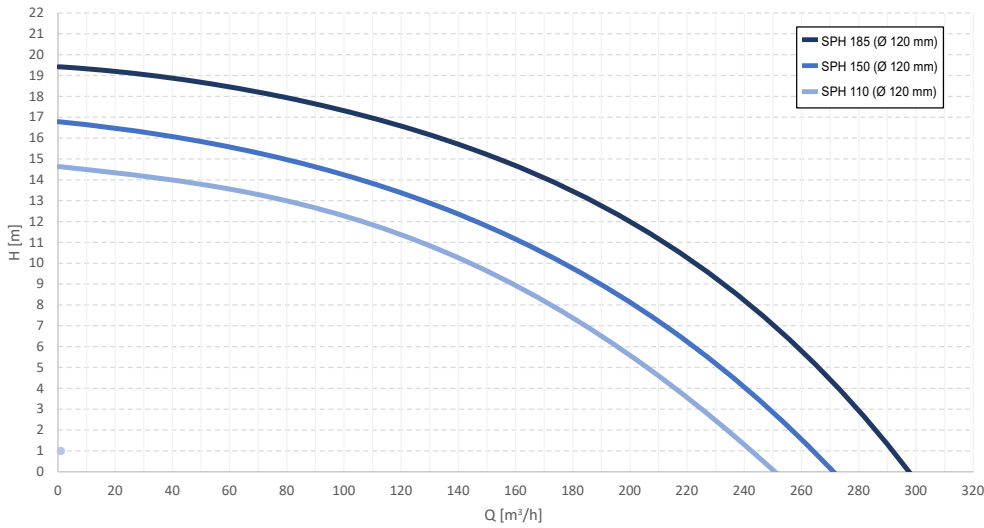
Free-standing mounting kit



90°-elbow for quick installation with 120mm-diameter flexible hose pipe

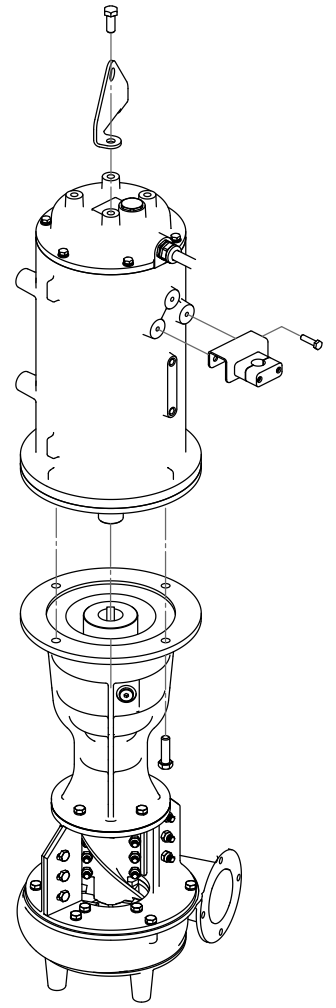
Product Range Performance

Modular Design



* Values measured with clear water at 20 °C.

Results may vary by changing the operating conditions depending on the flow rate, density and viscosity of the liquid, the type and dry matter content of the manure (depending on type of animal feed), the height and distance of the support as well as the diameter of the pipe.



203001779 Marzo 2020 Rights reserved to modify technical specifications.

This brochure has been edited for distribution in European Union countries



www.saveco-water.com