

DUST FILTRATION

# HOPPERTOP™ zero

Small Receiving Hopper Filter



**SMALL FOOTPRINT**

**EASY TO ASSEMBLE  
MAINTENANCE FRIENDLY**

The central image shows the hopper filter in two states. On the left, it is fully assembled with a motor on top. On the right, the hopper is shown without the motor, revealing the internal filter media. The hopper has the 'zero' logo on its side. In the bottom right corner, there is a yellow hexagonal logo with 'Ex' inside and the word 'CERTIFIED' below it.

## THE IDEAL CHOICE FOR SMALL RECEIVING HOPPER

HOPPERTOP™ is a compact dust collector designed for applications with limited installation space and low air flow requirements.

Dust particles separated from the air stream by a single WAM® cartridge filter element is returned directly to the process. An integrated automatic reverse air jet cleaning system, located inside the filter frame, ensures effective and continuous cleaning of the filter element.

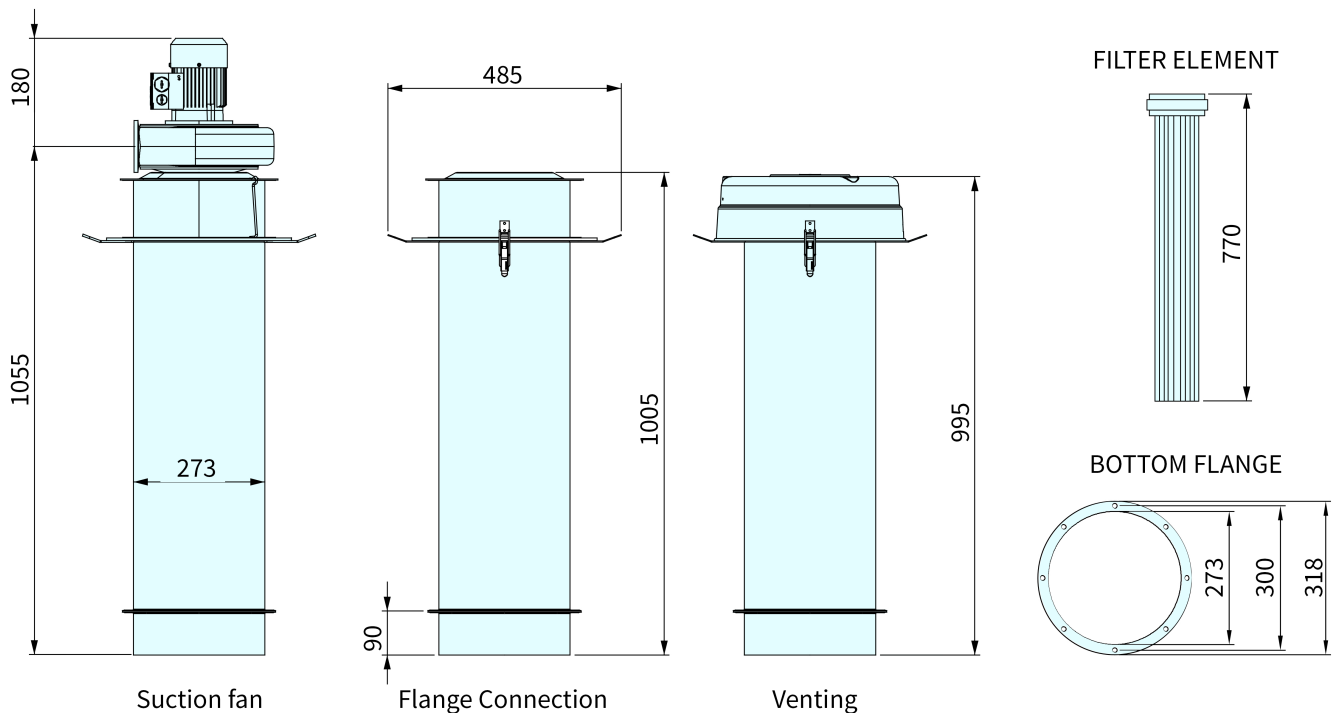
Thanks to its flexible outlet configurations, HOPPERTOP™ is ideally suited for venting mechanically loaded receiving hoppers – including cement weighing hoppers in concrete batching plants – as well as small process equipment such as mixers and pneumatic conveying systems.

An ATEX-compliant version is available, ensuring safe operation in hazardous environments and compliance with a wide range of industry requirements.

### Features

- Filter surface: 1.25 m<sup>2</sup>
- 0.18 kW suction fan
- Stainless steel design
- Hinged cover
- Weight: 15–40 kg (depending on configuration)
- Maintenance height: 870 mm
-  Compliant with Directive 2014/34/EU (Category II 3D)

### Overall Dimensions



MODEL	TYPE	FILTER MEDIA	ELECTRIC BOARD
HTP10PH1V	VENTING	PH	IN-OUT 24VAC
HTP10PH1R	FLANGE CONNECTION		
HTP10PH1VM	VENTING		FILCONTROL CONNECT (Differential Pressure Sensor Included) Multitension 25 to 260 VAC or VDC
HTP10PH1RM	FLANGE CONNECTION		
HTP10PH1AM	SUCTION FAN	PX	
HTPX10PX2AM	SUCTION FAN ATEX ZONE 22		
HTPX10PX2RM	FLANGE CONNECTION ATEX ZONE 22		

Dimensions in mm

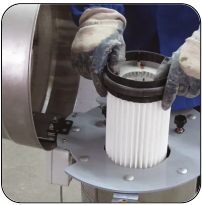
## Benefits



Suction fan available



Durable stainless steel design



Easy maintenance: hinged lid and tool-free removable cartridge



Easy to handle thanks to its compact and lightweight design



High-efficiency filter media with nanofibers and optimized pleat geometry

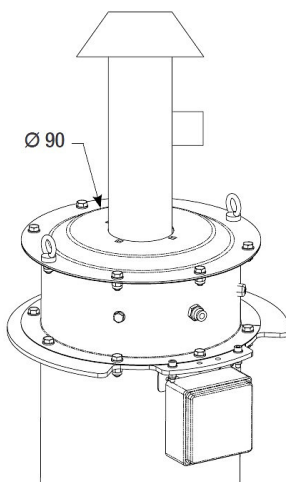


Compliant with dust emission limits of  $<10 \text{ mg/Nm}^3$

## Options & Accessories

### Pipe connection module

- Required for connection to a dust emission sampling point or suction duct
- Robust powder-coated steel cover
- Easy replacement with weather protection cover

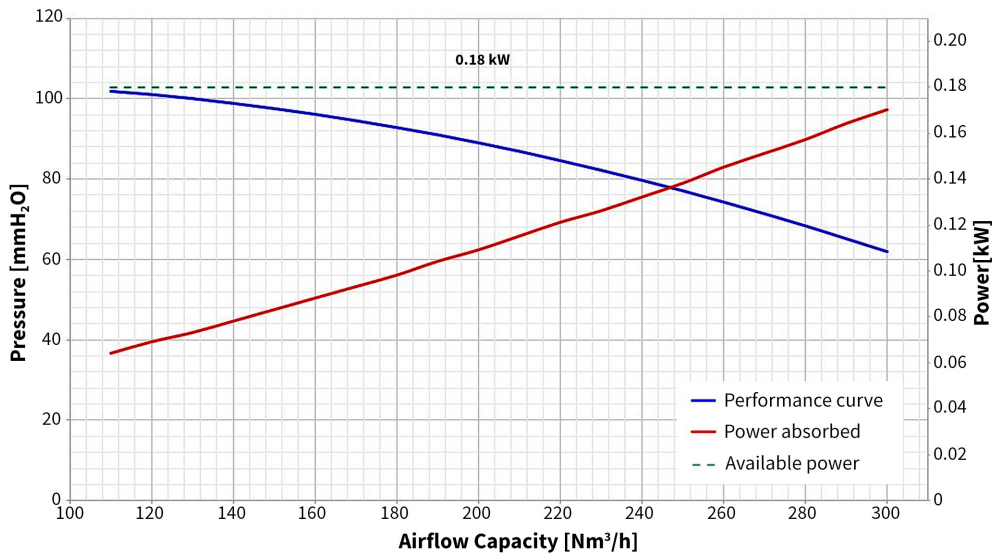


### Electronic Differential Pressure Meter

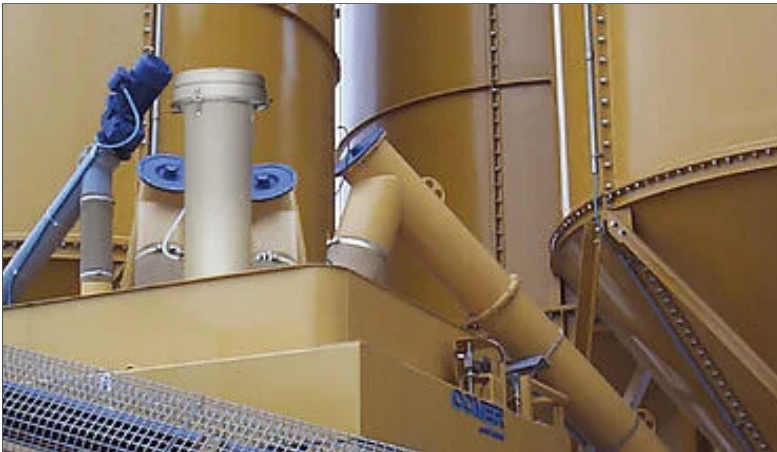
- Filter  $\Delta P$  continuously measured and displayed on 3-digit display;
- Cleaning activated via pressure threshold;
- Alarm pressure can trigger an external device;
- 4–20 mA output for  $\Delta P$  signal transmission to PLC;
- Can be retrofitted to existing filters.



# Fan Performance



# Application



063001632 June 2026 Rights reserved to modify technical specifications.



This brochure has been edited for distribution in European Union countries.

